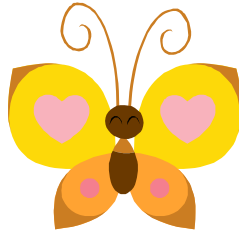


SPRING 2010

# The Parent Center

Salinas Adult School  
20 Sherwood Place  
Salinas, CA 93906  
(831) 796-6970



Parenting The Toddler

## EXPLORING TIMES

Diana Upton, Instructor  
(831) 796-6970  
April 8-June 3/Thursday  
9:30-12:30 a.m.  
18-24 months/Fee: \$45

This class is geared for parents with toddlers 18-24 months old. This course offers growth & development, nutrition, health, safety, discipline, emotional-social development.

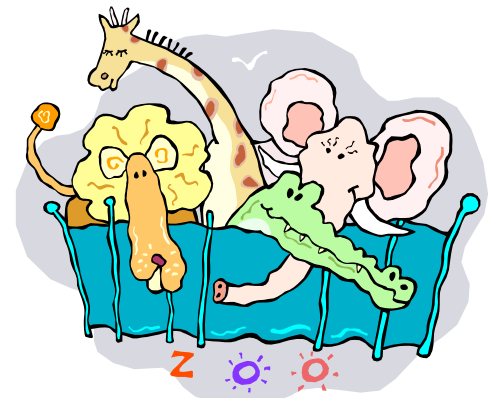
<u>Date</u>	<u>Topic</u>	<u>Activity</u>
4/08	Introductions, snack sign-ups	Egg shell collage (bring some clean-colored egg shells)
4/15	Growth & Development: What's your toddler up to?	Cutting up with scissors
4/22	Language Development	Fun with air
4/29	Taking care of yourself	Handprints
5/06	Safety: First Aid basics	Spring hat
5/13	Discipline	Paint with foil
5/20	Garden tour	Nature bracelet
5/27	The important role of fathers	Q-tip
6/03	Evaluations	Sun catchers

### Calendar of Events

Group Field Trip to...Happy Hollow Park and Zoo (located in San Jose)  
Friday, May 28<sup>th</sup>. You must purchase your tickets in advance at the Parent Center front desk.

- \$8.00 per person
- Park entry time is 10:00 a.m.

Map with directions will be provided upon registration.  
Please register by Thursday, May 27<sup>th</sup>.



Visit our website @  
salinasadultschool.com  
Childcare and Preschool Programs available on site  
**NO REFUNDS GIVEN UNLESS  
CLASS IS CANCELLED**

